



GPC VARIO II

Fully Automated System

Gel Permeation Chromatography
for Sample Clean-Up

Gel Permeation Chromatography for Sample Clean-Up

Avocados

Celery

Chili

Chocolate

Cocoa butter

Eggs

Feedstuff

Fennel oil

Fish

Hazelnut

Lanolin

Milk powder

Nut creme

Oranges

Popcorn

Quinoa

Sausages

Sediments

Sewage sludge

Soils

Sunflower oil

Tea

Thyme

and many more samples

Antimicrobial Substances

Antioxidants

Aromatic Amines

Azo dyes

Bisphenol A

Chlorinated Aromatics

Dioxin-like Polychlorinated Biphenyls

Persistent Organic Pollutants

Nitro and Nitroso Aromatics

Nonylphenols

Organochlorine Pesticides

Organonitrogen Pesticides

Organophosphate Plasticizers

Organophosphorous Pesticides

Polycyclic Aromatic Hydrocarbons

Phthalates

Polybrominated Diphenyl Ethers

Polychlorinated Biphenyls

Polychlorinated Dibenzodioxins

Polychlorinated Dibenzofuranes

Pyrethroids

Synthetic Musk Fragrances

Toxaphenes

Zearalenone

and many more analytes

have already been cleaned up with LCTech GPC systems.

And what is your challenge?

GPC VARIO II

Due to Unique Mechanics and Software
it is More Flexible than any other System



More about the **mechanics** on pages 4 - 5



More about the **software** on pages 6 - 7

GPC VARIO II

Do you want to use 100 mL vials? 250 mL or TurboVap flasks?

Or rotary evaporator flasks? Or combine different vials?

You are the one to choose - any time, even when the system is already running.

Efficient Sample Clean-Up

The GPC VARIO II fully automatically cleans up raw extracts and removes disturbing matrix components like lipids, pigments, sugars or humic acids.

The system is universally used - for the analysis of food and feed as well as for soil samples.

Gel permeation chromatography (GPC) is defined as the clean-up step in many official methods. This robust procedure is still the best solution for fatty food, spices, teas and sediments.



The GPC VARIO II fulfills the requirements of these guidelines:

USEPA SW-846 Method 3640A, USFDA, USDA/FSIS CLG-CHC3, EN 1528, EN12393, L00.0034, NOAA, AOAC 984.21, DFG S19 and more



*Whether food, feed or environmental sample
- GPC is suitable for clean-up*

Flexibility at Highest Level

Due to unique mechanics and intelligent software the GPC VARIO II is very flexible and can be adapted to changing requirements at any time.

It allows arbitrarily combining different glass sizes from 1 mL to 1000 mL. The sample vials can be added or removed even during a current run.

Using the system all classical injection procedures from sample loop overflow to quantitative transfer to several glasses are possible.

Additionally samples can be fractionated according to most individual requirements, even into different glass types and sizes.



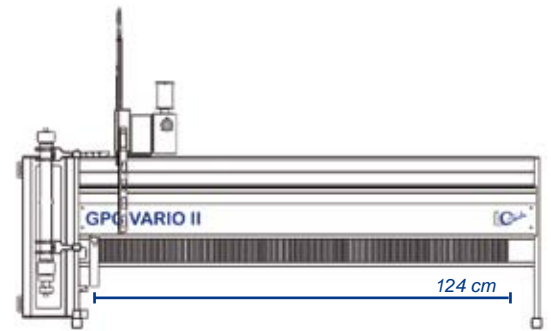
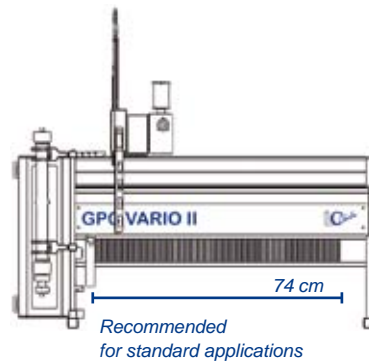
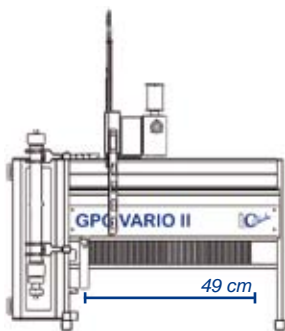
**Up to 180 samples
within one sequence!**

Configuration According to Requirements

The system is available in three versions with differing usable space
- according to sample quantity and space conditions in the laboratory.

Thus, it is suitable for a high quantity of samples, e.g.

- up to 84 samples in the classical GPC application with sample presentation in 16 mL and uptake in 100 mL vials
- up to 84 samples with presentation in 16 mL and uptake in 50 mL TurboVap vials
- up to 60 samples with presentation in 16 mL and uptake in 250 mL vials
- up to 60 samples with presentation in 16 mL and uptake in 100 mL round bottom flasks
- up to 180 samples with presentation in 16 mL and uptake in test tubes



Safety and Proven Quality

The foundation for GPC Vario II is a proven and thousand fold tested robotic system with an accordingly high level of performance.

Only high quality components are used, the need for maintenance and repair is extremely low.

GPC VARIO II fulfills the requirements of VDE and low voltage directives and is CE certified. It complies with the high standards of the German Machinery Directive with safety features like emergency switch, stop at collision of the robotic arm and protection against injuries by the needle.



Your direct line to LCTech

Whenever you have further questions or remarks

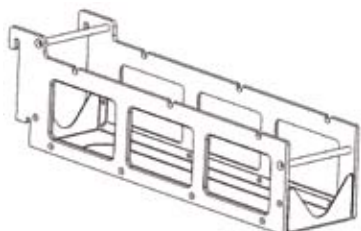
- we are in reach for you.

*Please call us at +49 8081 93680
or write an e-mail to info@Lctech.de*

Feel Free - Any Combination, at Any Time

The mechanism for positioning the sample racks into the system is unique on the market (patent registered) and in combination with the intelligent software allows for flexibility, which has never been possible before.

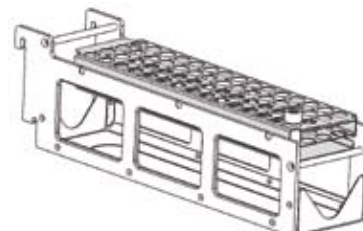
The direct advantage: The GPC VARIO II can operate glass sizes from 1 mL to 1000 mL in any combination.



+



=



The **frame** is available in two versions (10 or 12 cm wide).

It can be used for different glass types.

The samples are positioned into the **tray**.

The sample numbers are etched into it.

By simply putting the tray into the frame the **rack** is completed.

It can directly be positioned into the GPC system.



Equipping the System - Easy

The racks are quickly and easily assembled on the system. No tools necessary!

Then the user simply informs the software of the location and handling instructions and Vario II automatically handles the rest.

In case there is an urgent sample, it can easily be given top priority.



The system is emission free ...

*... and does not need a fume cupboard.
The vials remain closed.*

These racks are available for the GPC VARIO II right now:

	Glass type and size	Max. vials / rack	Product N° of the rack	Frame needed?
Racks for sample vials				
	1 mL (GC)	60	11920	Type 10 cm (11915)
	4 mL	30	11926	Type 10 cm (11915)
	5 mL round bottom	30	11933 with adapter 10430	Type 10 cm (11915)
	16 mL	30	11933	Type 10 cm (11915)
Racks for test tubes				
	75 x 12 mm	30	12117	Type 10 cm (11915)
	100 x 16 mm	30	12116	Type 10 cm (11915)
Racks for Turbo-Vap flasks				
	50 mL	14	12104	Type 12 cm (12103)
	200 mL	5	12105	Type 12 cm (12103)
Racks for laboratory bottles				
	60 mL (Dionex ASE)	30	12106	Type 12 cm (12103)
	100 mL	14	12107	Type 12 cm (12103)
	250 mL	10	11962	-
	500 mL	3	12000	-
	1000 mL	3	11994	-
Racks for rotary evaporator flasks				
	100 mL with NS 14/23	10	11963	-
	100 mL with NS 29/32	10	11970	-
	250 mL with NS 29/32	8	11976	-
	500 mL with NS 29/32	6	11979	-
	1000 mL with NS 29/32	6	11988	-

Do you want to work with another glass type or size?

We are able to produce new racks according to your requirements - simply contact us.

The Software - Very Easy in Daily Routine

For daily work the GPC VARIO II can easily be controlled with the intuitive software. Also less experienced laboratory staff can handle it after a short introduction.

For common applications **standard methods** are pre-programmed, allowing for a very fast start of work.

Diverse **safety features** and inquiries ensure a trouble-free operation in routine, avoiding the loss of a sample or the waste of solvents.

The parameters which are important to routine work can all be found in the main window of the software. There the user has a clear overview over rack positions and sample list.

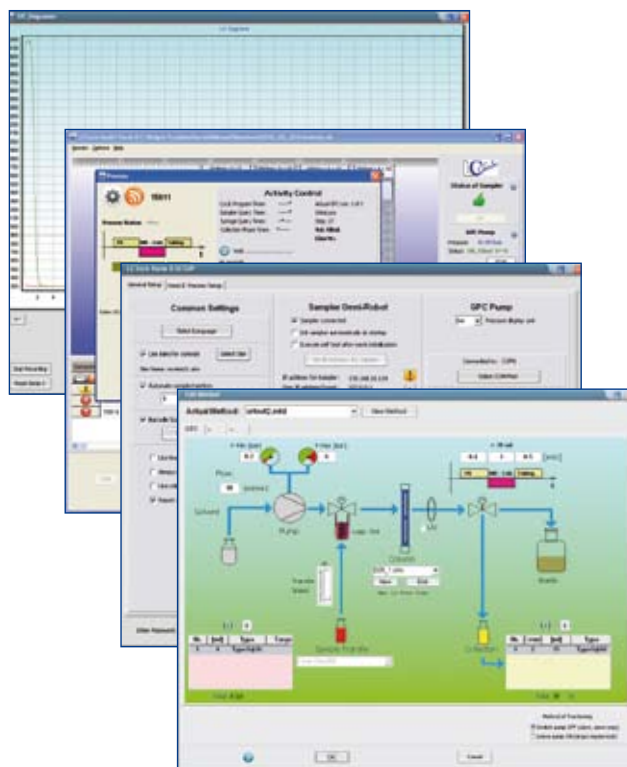


A software for the user

The Software - Unlimited Possibilities

The software of the GPC VARIO II is the most flexible one available for GPC systems. It offers comprehensive possibilities for all requirements in gel permeation chromatography.

- ✓ In **Editing the method** an individual method can be defined for each sample of the sequence, shown directly in the flow scheme and with immediate plausibility checks.
- ✓ **UV chromatograms can be displayed**, enlarged and overlaid.
- ✓ A **report generation** allows exporting pdf files for methods, columns and samples.
- ✓ All previously run samples are traceable over the long term in compliance with Good Manufacturing and Laboratory Practices. Data is stored in **detailed log files** which can be exported with the reports.
- ✓ and much more.



Diverse views of the software

The Main Window of the Software

The **position of the racks** precisely corresponds to the one on the system. The racks are simply chosen from a list and positioned by drag and drop.

The samples are marked with colors.

Telling **symbols** additionally provide overview.

The screenshot displays the main window of the LCTech Vario II software. At the top, there are five rack positions labeled with their dimensions and sample types: 001ml x 3 x 10 Type1@16, 0100ml x 2 x 7 Type1@100, 0004ml x 4 x 15 Type1@4, 0200ml x 2 x 5 Type1@200, and 0500ml x 1 x 3 Type2@500. Below the racks is a table with the following data:

N°	Status	Number	Name	Method	Code	Status	In.Time	Proc.Time
1	✓	15597	Name	B4.mtd	LCTech	..finished	15:28:13 06.10.2010	11:12:36 07.10.2010
2	✓	15600		Cleaning Step	Cyc=0C	..finished	15:33:07 06.10.2010	11:16:03 07.10.2010
3	⊘	15598	Name	B4.mtd	LCTech	OK - waiting	15:28:20 06.10.2010	
4	⊘	15601	Name	B4.mtd	LCTech	OK - waiting	11:05:06 07.10.2010	
5	⊘	15603	Name	C553-2.mtd	LCTech	OK - waiting	11:11:50 07.10.2010	
6	⊘	15604		Cleaning Step	Cyc=1C	OK - waiting	11:12:26 07.10.2010	

On the right side, there are several control panels: 'Status of Sampler' with a green thumbs-up icon and an 'Init' button; 'GPC Pump' showing 'Pressure: 0.00 bar' and 'Status: OK, STOPPED' with a 'START' button; 'UV Recording' with fields for 'UV D. Value', 'Start Time', and 'Duration', and a 'Chromatogram' button; a 'SETUP' button; and 'Actually Processing' with a green arrow icon, a 'Report' button, and a 'Reset Sample Status' button.

At the bottom, there is a 'Log File' window showing a list of events: '15597 -> Process, 11:12:36 07.10.2010', '15597 -> finished: 11:16:01', '15600 -> Process, 11:16:03 07.10.2010', 'Clean cycle finished: 0 x; 11:16:11 07.10.2010', and '15600 -> finished: 11:16:14'. Below the log file, there are buttons for 'Quit', 'Arrange Racks', 'Methods', 'Add New Sample', and 'Edit Item'. A status bar at the bottom indicates 'Sampler: Not Init.' and 'Total items in list: 6, ready for process: 4'. A help icon (?) is also present.

An intuitive **navigation** leads through the software.

With one click a comprehensive **help function** can be called up.

The **sample list** is clearly shown with all decisive parameters.

Prioritization of an urgent sample?
Simply put it to another position per drag & drop.



For the GPC VARIO II an **extension for processes in solid phase extraction (SPE)** is available. Thus, all normal SPE columns can be handled.

Moreover the system can be upgraded with a **vacuum chamber** and used as **concentrator**.



The LCTech **GPC columns** are available filled with bio-beads or unfilled in various lengths and filling heights.

They can be used with diverse solvents and refilled with no effort, even in the laboratory.



The **liquid level switch** controls the level of liquid in the waste reservoir and, if the bottle is full, stops the process. This is simultaneously shown in the software.



The **barcode reader** is highly recommended by LCTech for tracking the samples, which thus becomes much faster and with fewer errors.



The **UV detector** with fixed wave length is suitable for quality assurance of the GPC column.

Not shown here: A **column shift valve** for up to 5 columns allows choosing different GPC columns in the software.

And to save solvents ...



The **Distillation Device SR6/Fully Automated** allows recycling or upgrading solvents from technical to analytical grade.

The device has an input volume of about five litres and is designed for average solvent consumption in a laboratory. Its use is safe and maintenance is low.

It is operated by a comfortable touch-screen control, allowing a full automation of distillation processes.

Essential savings can be obtained. Cost for purchase, storage and disposal of solvents can decrease significantly.



Visit us on www.LCTech.de

Additional details and updated information about our products can be obtained from our website.

About LCTech



LCTech GmbH is based in Dorfen, Germany. Since 1998, we have been developing and supplying products and methods for the preparation and analysis of food, animal feed and environmental samples.

Our product range includes both semi and fully automated sample preparation systems as well as consumables utilised in the analysis of contaminants and residues.



„Customer satisfaction is our top priority“

Michael Baumann, Managing Director



LCTech GmbH

Bahnweg 41
84405 Dorfen, Germany

Tel. +49 (0)8081 / 9368-0
Fax +49 (0)8081 / 9368-10

info@LCTech.de

Visit us on www.LCTech.de

And a distributor nearby

Ordering Information	
Description	Product N°
GPC VARIO II with 74 cm usable space (recommended)	12030
GPC VARIO II with 49 cm usable space	12031
GPC VARIO II with 124 cm usable space	12032
Technical data: 110 - 220 VAC, 50 / 60 Hz The system consists of robotic system, GPC pump, syringe pump, different valves and software. Trays & GPC columns have to be ordered additionally, a computer is needed to run the system.	

We reserve the right for technical changes.
LCTech assumes no liability for the above and the illustrated application examples.

© LCTech GmbH, Germany
P/N 12299, as of October 2010